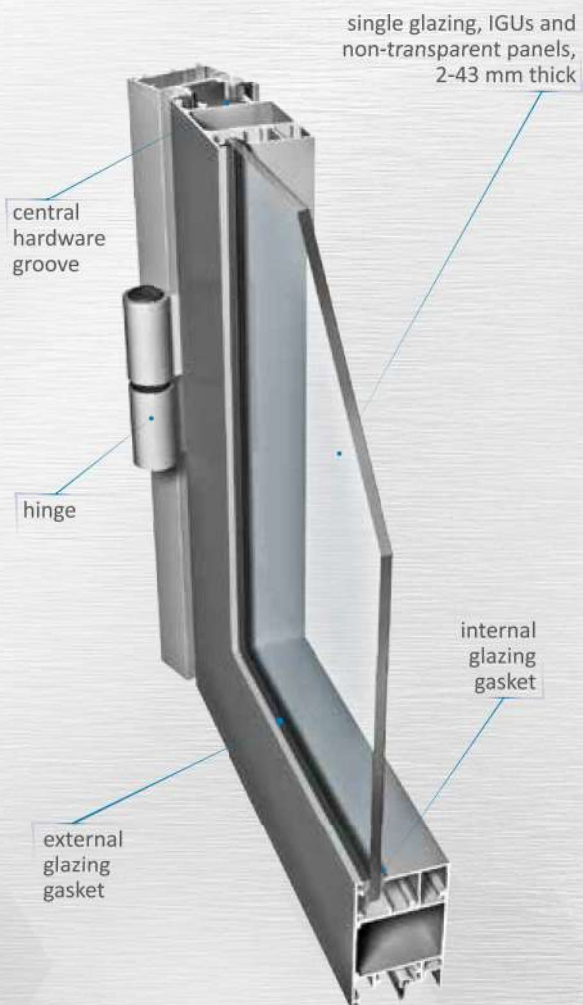


INTERNAL WINDOWS AND DOORS

Ponzio PE50

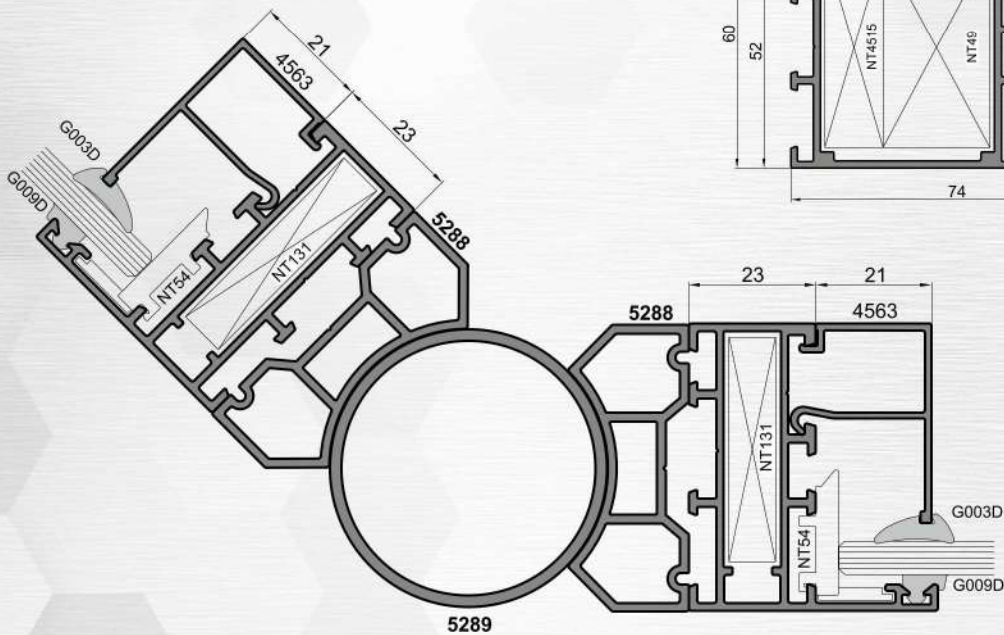
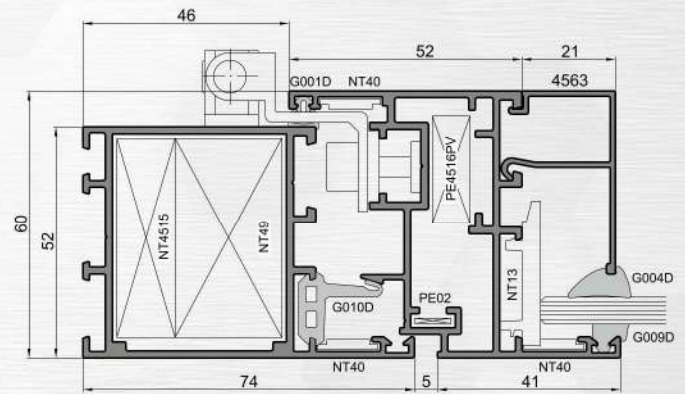
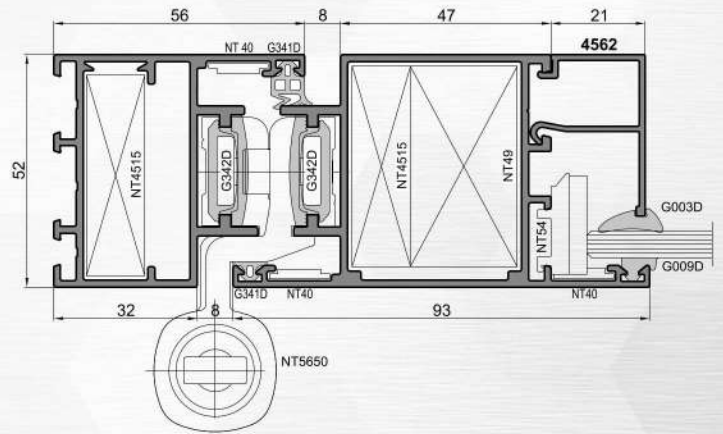
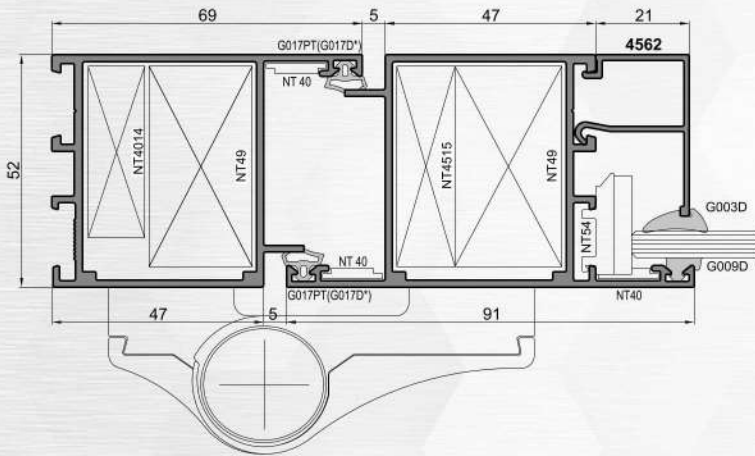


A non-insulated aluminium profile system designed for the manufacturing of internal constructions: glazed partitions, windows and doors.

- › Euro hardware groove in door profiles
- › window sashes with PVC hardware groove available
- › wide range of possible constructions: coplanar doors, doors with a central hardware groove, glass doors, manual and automatic sliding doors, swing doors, windows and glazed partitions
- › wide range of available hardware
- › window sashes flush with the frame on the outside
- › sliding doors can be either manual or automatic
- › wide choice of possible door leafs - with or without kickplate, with or without threshold
- › interconnected with other Ponzio systems
- › screwed and crimped joints available

INTERNAL WINDOWS AND DOORS

Ponzio PE50



Technical parameters

Filling thickness	»» doors and partitions: 2 - 35 mm; windows: 5 - 43 mm
Profile depth	»» 52 mm
Type of filling	»» single glazing, IGUs and non-transparent panels
Smoke control	»» class S_a and S_{200} in acc. with PN-EN 13501-2:2016
Certification	»» National Technical Assessment ITB-KOT-2018/0621